

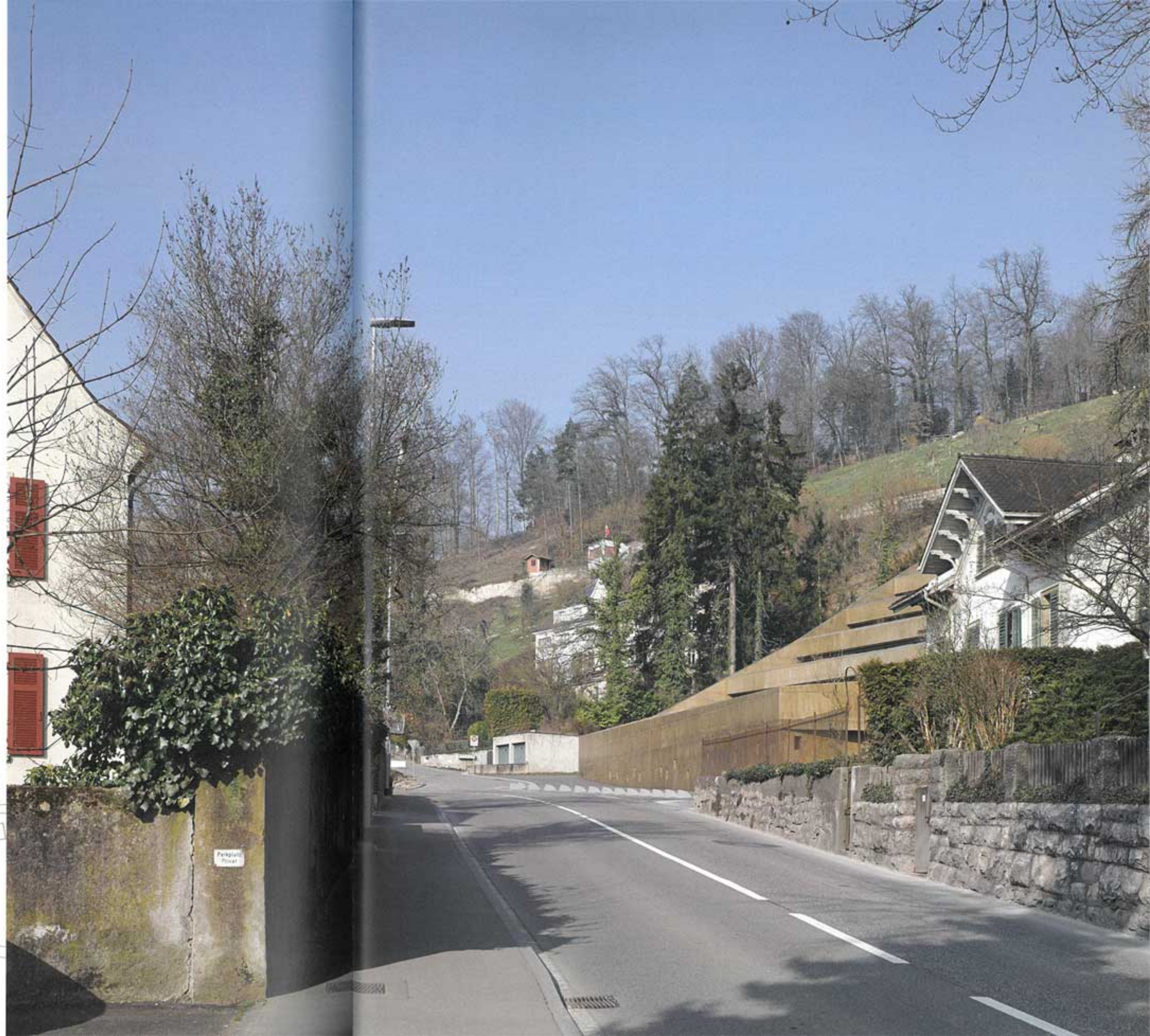
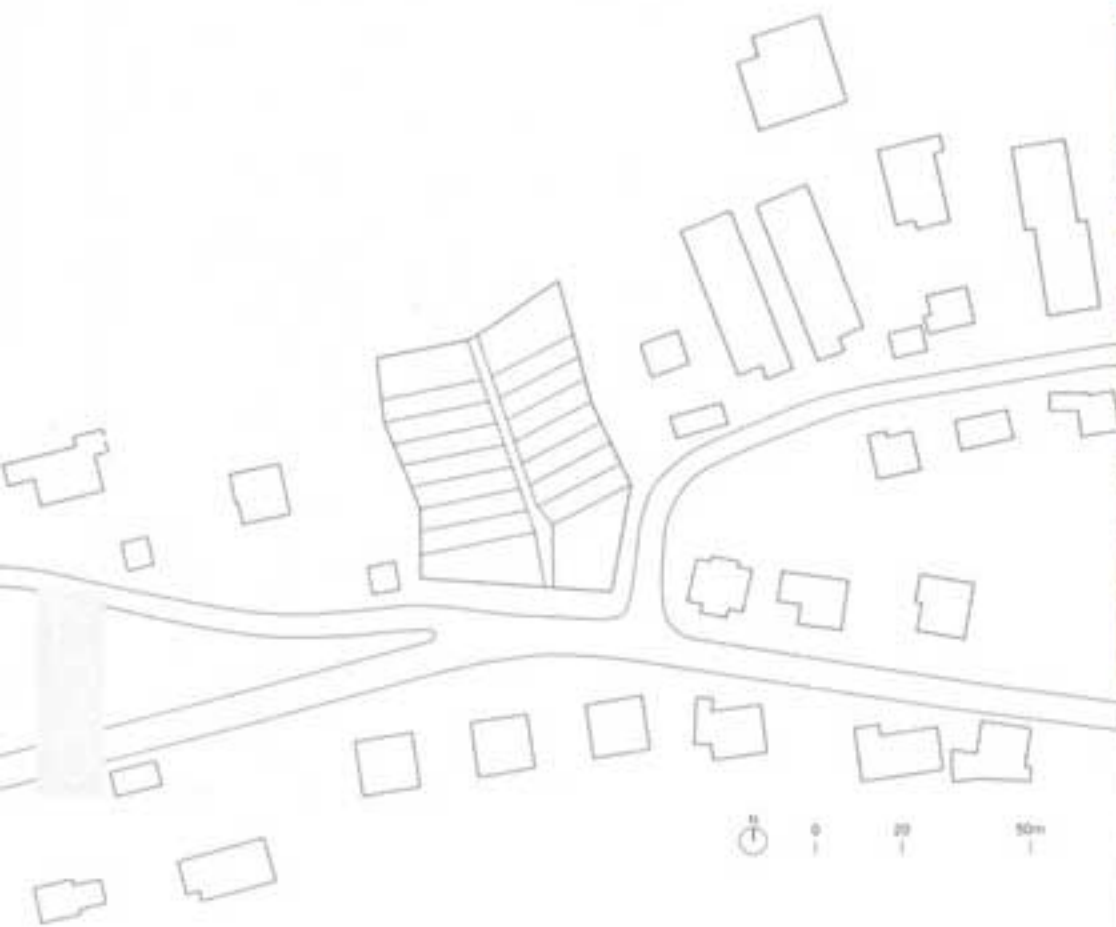
## Terraced Housing in Brugg

Ken Architekten

This robust residential complex is located in heterogeneous residential fabric on a southerly slope on the edge of the Swiss town of Brugg. A perimeter wall of exposed concrete holds together 16 condominium apartments in an irregular form that responds boldly to the topography of the slope.

The surfaces surrounding the new structure - meadow and asphalt - abut the building. On the building's southeast corner, the asphalt even flows into the lobby. The sloping elevator situated here serves the eight living levels; the ceiling deck right above the elevator shaft doubles as cascading stair that leads to the communal terrace and playground on the uppermost level. Together, stair and elevator form the spine, which is clearly legible on the exterior as concrete band. On both sides of it the apartment units are arranged in layers of space that run parallel to the slope and are oriented to the spacious roof terraces.

Both the thick concrete parapets with oblique tops and concrete walls shield these outdoor spaces from noise and visual contact with passer-by and neighbours. Moreover, the ground-level parking garage screens the entire ensemble - and in particular, the roof gardens of the first floor flats - from the street. Each unit has two entrances: a large entrance connected









directly to the elevator at the rear of the apartment and, adjacent to the facade, a link to the stairway. From there the living area extends along the completely glazed front - between apartment and terrace - to the outer wall. Should separate rooms be desired, lightweight wall construction may be employed.

The zone situated between the entrance and the bathroom

#### 부흐크 공동주택

스위스의 북부도시 부흐크. 잔잔한 강과 아늑한 산이 자아내는 평화로운 풍경 속에 독특한 건물 한 채가 들어섰다. 커다란 서랍장에서 서랍을 모두 꺼내놓은 것 같은 모습의 이 건물은 바로 공동주택이다. 주어진 대지는 마을 뒷산에서 이어져 내려오는 완만한 경사지다. 건물은 이러한 지형을 존중해 대지를 따라 계단식으로 앉혀졌다. 그 결과 무엇 하나 과하지 않은 주변 풍경에 자연스럽게 녹아들게 되었다. 총 9개의 층이 계단처럼 쌓였고, 주차장으로 쓰이는 1층을 제외한 각 층에는 중앙의 계단실 양쪽으로 각각 한 개의 주거공간이 자리한다. 총 16가구의 집인 셈이다.

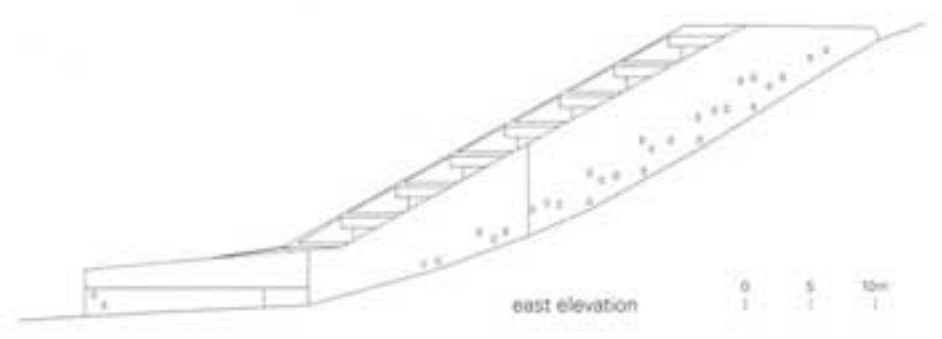
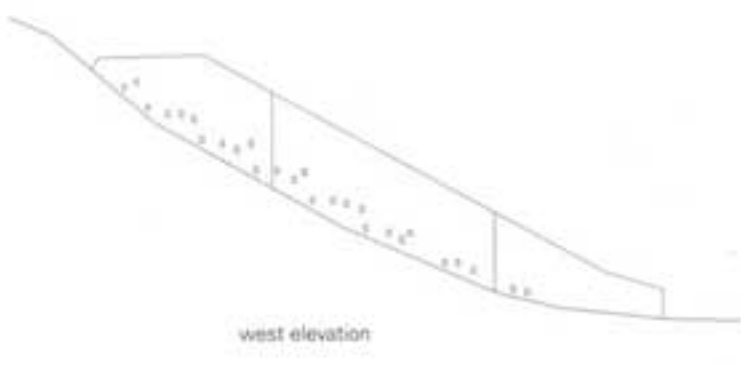
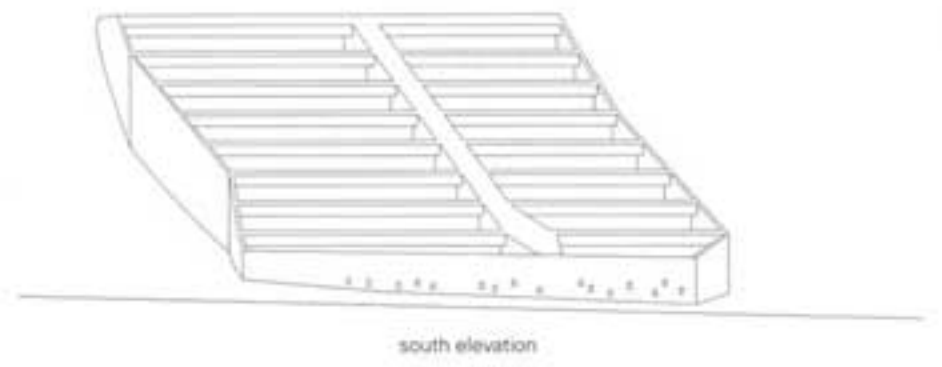
contains auxiliary spaces and separates the living spaces from the slope-side basement; unheated storage spaces and laundry rooms serve as a buffer. Small bathroom and basement windows, which are arranged in an irregular pattern, perforate the perimeter walls. Similar openings in the wall facing the street and along the spine allow daylight and fresh air to enter the garage and stairway.

이 공동주택의 가장 큰 특징은 언덕 아래, 도로 쪽을 향해 있는 넓은 테라스다. 테라스에는 천장부터 바닥까지 닿는 커다란 통유리가 끼워져 있는데, 그 덕분에 따뜻한 햇빛과 시원한 바람을 받아들이며 동화속이나 나을법한 평화로운 마을 풍경도 마음껏 즐길 수 있다. 도로에서 생기는 소음 문제는 1층에 완충 공간인 차고를 두어 해결했고, 너무 개방적이라 사생활이 침해될 수 있다는 문제는 건물 측면을 완전히 막아 테라스를 개인적인 야외 공간으로 만들으로써 풀어냈다. 정면과 측면의 외벽에는 크고 작은 사각형 창이 불규칙적으로 나 있다. 이 창들을 통해 차고와 계단실에도 신선한 공기와 햇빛이 들어오며, 특별한 기계 설비 없이도 쾌적한 환경이 조성된다.

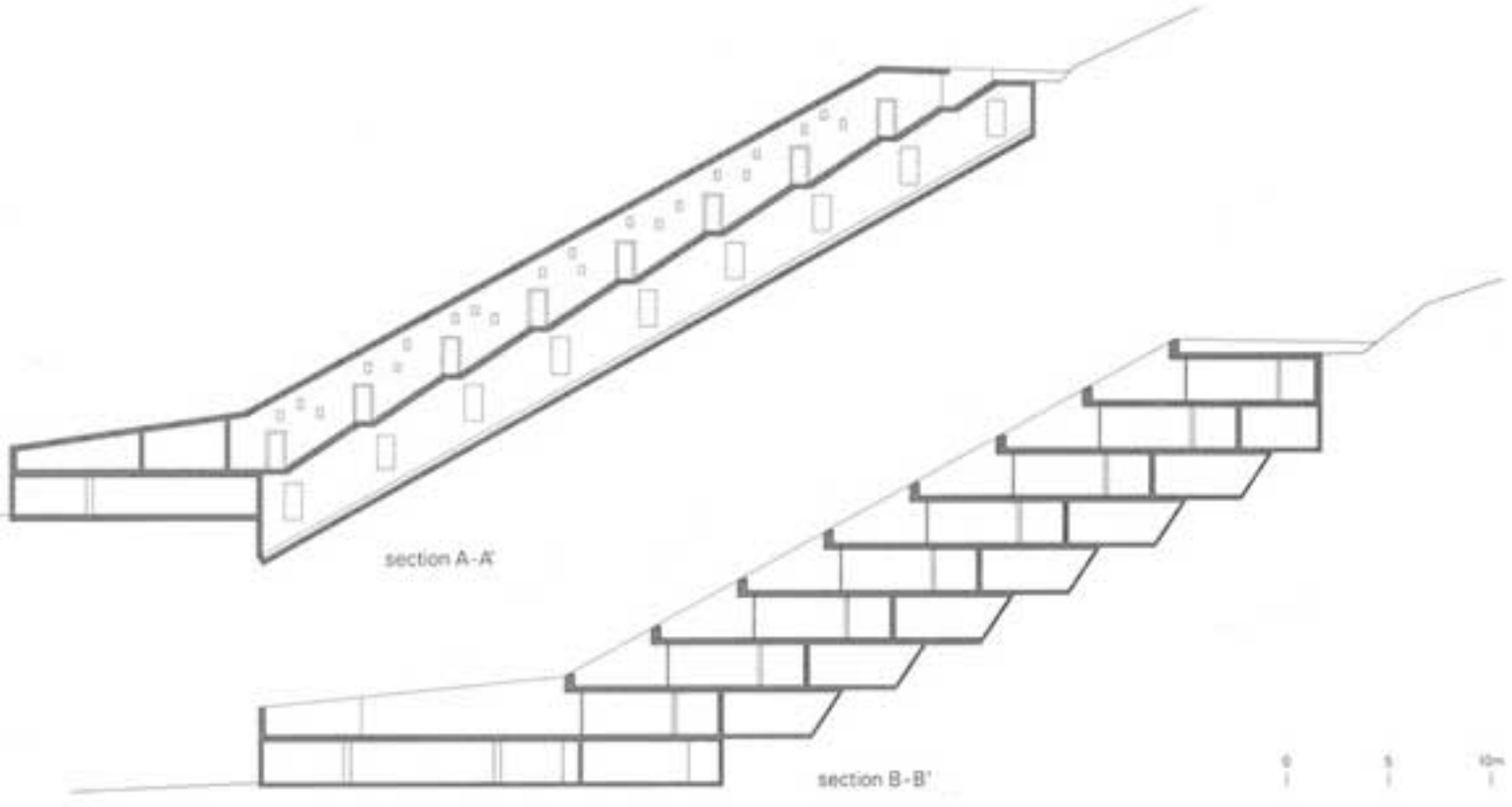




Project: Terraced Housing in Brugg  
Location: Brugg, Switzerland  
Architects: Ken Architekten  
Civil engineer: Heyer Kaufmann Partner  
Client: Wartmann Immobilien AG  
Site area: 4,380m<sup>2</sup> / Gross floor area: 2,644m<sup>2</sup>  
Competition: 2008.6 / Construction: 2013.4  
Photograph: ©Hannes Henz (courtesy of the architect)



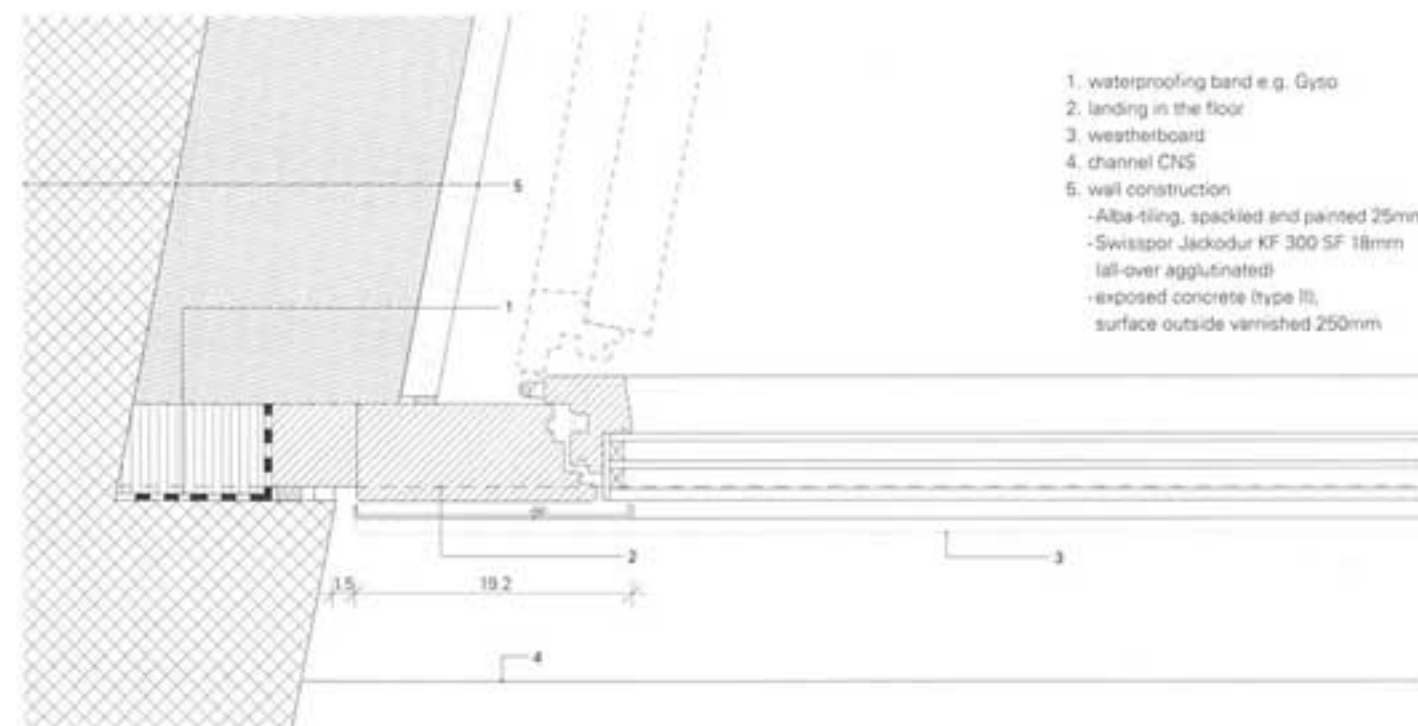
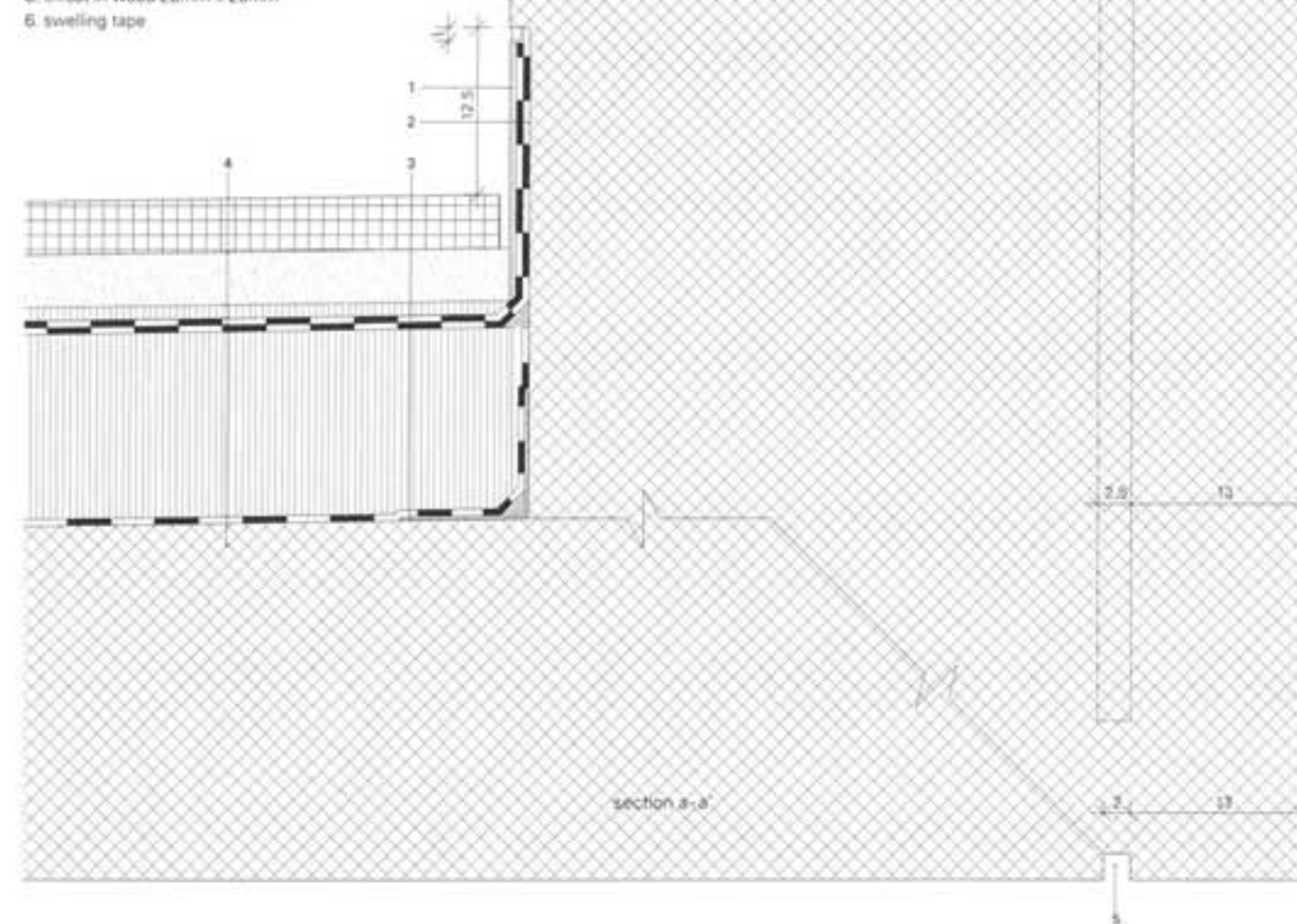








1. cover plate, Alu stove-enamelled
2. working joint, vertical with joint tape
3. joint tape
4. ceiling construction
  - cement slab 40mm
  - grit 40mm
  - drainage Enkadrän TP 10mm
  - EPS WF Ardflam, all-over agglutinated 5mm
  - EGV3 loose, overlapping welded 5mm
  - Swisspor PUR-Alu 140mm (0.024W/mK, 30kg/m³)
  - EVA35, all-over agglutinated 5mm
  - ferroconcrete in slope 240-30mm
  - deposit for sealing 15 x 370 mm
5. throat in wood 20mm x 20mm
6. swelling tape



1. waterproofing band e.g. Gyso
2. landing in the floor
3. weatherboard
4. channel CNS
5. wall construction
  - Alba-tiling, spackled and painted 25mm
  - Swisspor Jackodur KF 300 SF 18mm (all-over agglutinated)
  - exposed concrete (type II), surface outside varnished 250mm